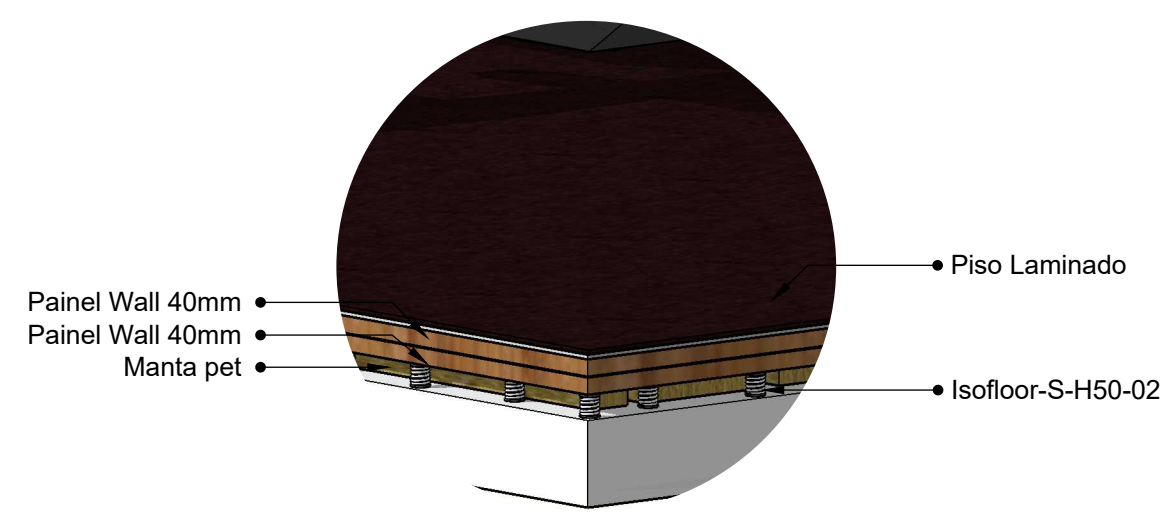
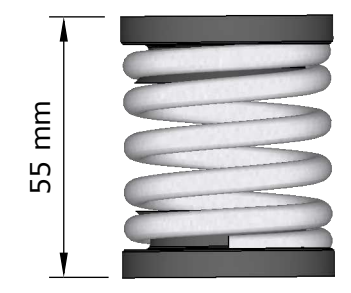
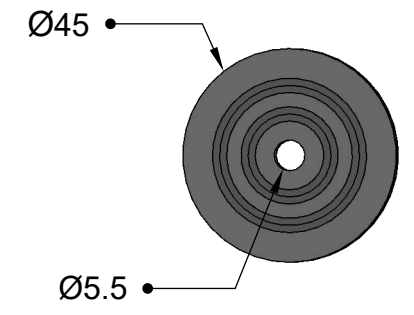
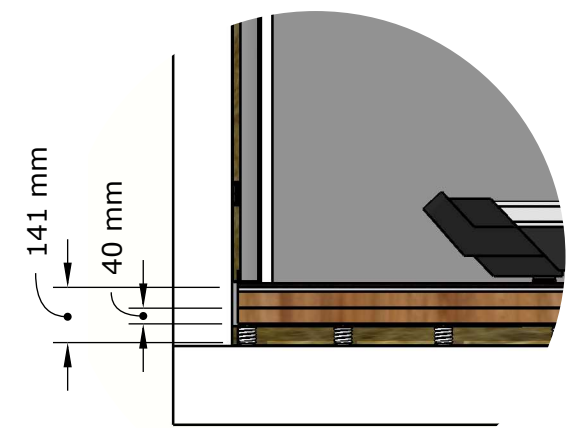


01 **ACADEMIA LIGHT- ISOMÉTRICA**

**ISOFLLOOR-S-H50-02**



**Detalhe 01**  
Camadas do piso flutuante para Academia Light







**Detalhe 02**  
Medidas das camadas para Academia Light

**ESQUEMÁTICO DE INSTALAÇÃO DOS AMORTECEDORES**

PARÂMETROS DO AMORTECEDOR	
PARÂMETRO	ISOFLLOOR-S-H50-02
Espessura Total [mm]	141
Peso do Piso [kgf/m <sup>2</sup> ]	64
Sobrecarga Suport. [kgf/m <sup>2</sup> ]	526
Frequência Natural [Hz]	12.41
ΔLw Estimado [dB]	>29
Peças por m <sup>2</sup>	7.66
Dim. Recom. do Painel [m]	1.2 x 2.5

**PISO FLUTUANTE LIGHT**

OBRA: -		
CLIENTE: -		
PROJETISTA: AM		
UNIDADES NÃO INDICADAS: SÍMBOLO ISO:		
Massa [kg]  Comp [mm] 		
<b>AVD ANTI VIBRATION DYNAMICS</b> Rua Casarejos, 271 - Sala 33 Vila Mogilar - Mogi das Cruzes São Paulo - 08773-300 TEL: (11) 2668-6514 		
PEÇA: ISOFLLOOR-S-H50-02  CÓDIGO: DRWT-1003-04-01		
REVISÃO: 01 PROPOSTA COMERCIAL: -	ESCALA: - DATA: 06-10-21	FOLHA 1/1